

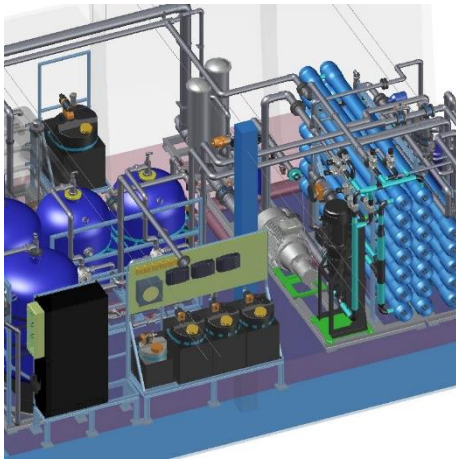
RETROFITS
NEW BUILDINGS
SERVICE
SPARE PARTS

MARITIME WATER TREATMENTS

REVERSE OSMOSIS

Baltic Water GmbH is a supplier of water treatment plants in the maritime sector. The product portfolio of Baltic Water includes small RO plants for yachts till large RO plants for cruise line vessels.

The daily drinking water output of our RO plants ranges from of 5 m³/d, up to 1.200 m³/d and higher. Beside RO plants Baltic Water also offers the full range of fresh water treatment according to U.S. Public Health Service (USPH) guidelines.



The plants can be installed during the building phase in dock or as retrofit during operation. In a retrofit, the plant is brought on board in customized prepared components and will be installed within 3 weeks without interruption of service. To ensure long-term trouble-free operation, we offer a worldwide after sales service and spare part delivery and any water treatment plant manufacturer.

BENEFITS

- Durable membrane system
- High energy efficiency
- Lowest consumption of consumables
- High quality materials
- Best available maintenance concept
- State-of-the-art technology and design
- Capacity according to demand from 20-1500 t/d
- Any desired quality achievable
- Temperature from 0-35°C
- Fully automated systems
- Comfortable visualization



The most commonly used process for seawater desalination is reverse osmosis. The seawater is desalinated under high pressure via a reverse osmosis membrane. The product is salt-free water of drinking water quality. The reverse osmosis plant is preceded by a filtration plant to filter solids from the seawater. The filtration plant is backwashed fully automatically during ongoing reverse osmosis operation without stopping drinking water production.



YOUR DRINKING WATER IS IN SAFE HANDS WITH US,
WE KEEP IT AT HIGH QUALITY.

POTABLE WATER TREATMENT

The water treated via reverse osmosis or evaporator does not contain any minerals and must be protected against possible biological contamination. With the mineralization plant, calcium and chlorine are added to the water in a fully automatic controlled manner and the pH value is adjusted. The product water thus complies with the relevant WHO and USPH regulations.

The quality is permanently measured using online analysis technology and the data is recorded without gaps.

<p>Treatment for water distribution</p> <ul style="list-style-type: none">▪ Chlorination▪ pH-adjustment▪ Distant point analyzing	<p>Fresh water treatment</p> <ul style="list-style-type: none">▪ Mineralization▪ Disinfection▪ pH-control
<p>Bunker water treatment</p> <ul style="list-style-type: none">▪ UV-systems▪ Chlorination▪ Chemical dosing units	<p>Softening systems to supply laundry and galleys</p>

SPARE PARTS

- On-board system and spare parts analysis
- Spare and replacement parts
- Services and repairs
- Service contracts

We supply all kinds of spare parts and consumables for water treatment to end customers. From pumps, valves, instrumentation and gauges to filters, filter materials and membranes.

A FAST AND RELIABLE DELIVERY OF SPARE PARTS

If you need assistance, we will come to you on board and do a system and spare parts analysis

MAINTENANCE

WITH OUR MANY YEARS OF EXPERIENCE IN WORLDWIDE OPERATIONS, WE ARE AT THE SERVICE OF OUR CUSTOMERS

Regular maintenance and servicing measures are essential for the most trouble-free and efficient operation of your plants.

Our professional system maintenance increases system availability and also ensures low operating costs. We instruct your employees in the system through practice-oriented training and are your competent contact after the service if you have any questions.

We offer you comprehensive services in the field of maintenance

Preventive Maintenance / Repair / Inspections / Identification of potential for improvement



WE TAKE SERVICE TO A NEW LEVEL!

Let our experienced service technicians impress you.
We work professionally and are specialized in plant engineering.



LET OUR EXPERIENCED ENGINEERS AND SERVICE TECHNICIANS IMPRESS YOU

CONTACT US

BALTIC WATER GMBH
Emmenfeld 2A
21423 Winsen / Luhe
Germany

www.balticwater.com
info@balticwater.com

